



PFMc

Professional Forest
Management,
LLC

Wildfire Pros



Inverse Condemnation by Wildfire





The New Wild West: “Using Wildfire where allowable...”

SCIENCE

Land Managers Can't Burn the West Fast Enough

Prescribed burns, which create buffers against larger fires, can do only so much.

AMANDA MONTHEI OCTOBER 28, 2020



Huge Wildfires are often Premeditated

“If the location is right, if extreme weather is not predicted, and if the appropriate resources are on hand to help should anything go awry, allowing wildfires to burn naturally—with viable fire lines established ahead of time—could be the best way to accomplish widespread forest management.”



Using
unplanned
fire....



To reintroduce fire
to fire-depleted
ecosystems....



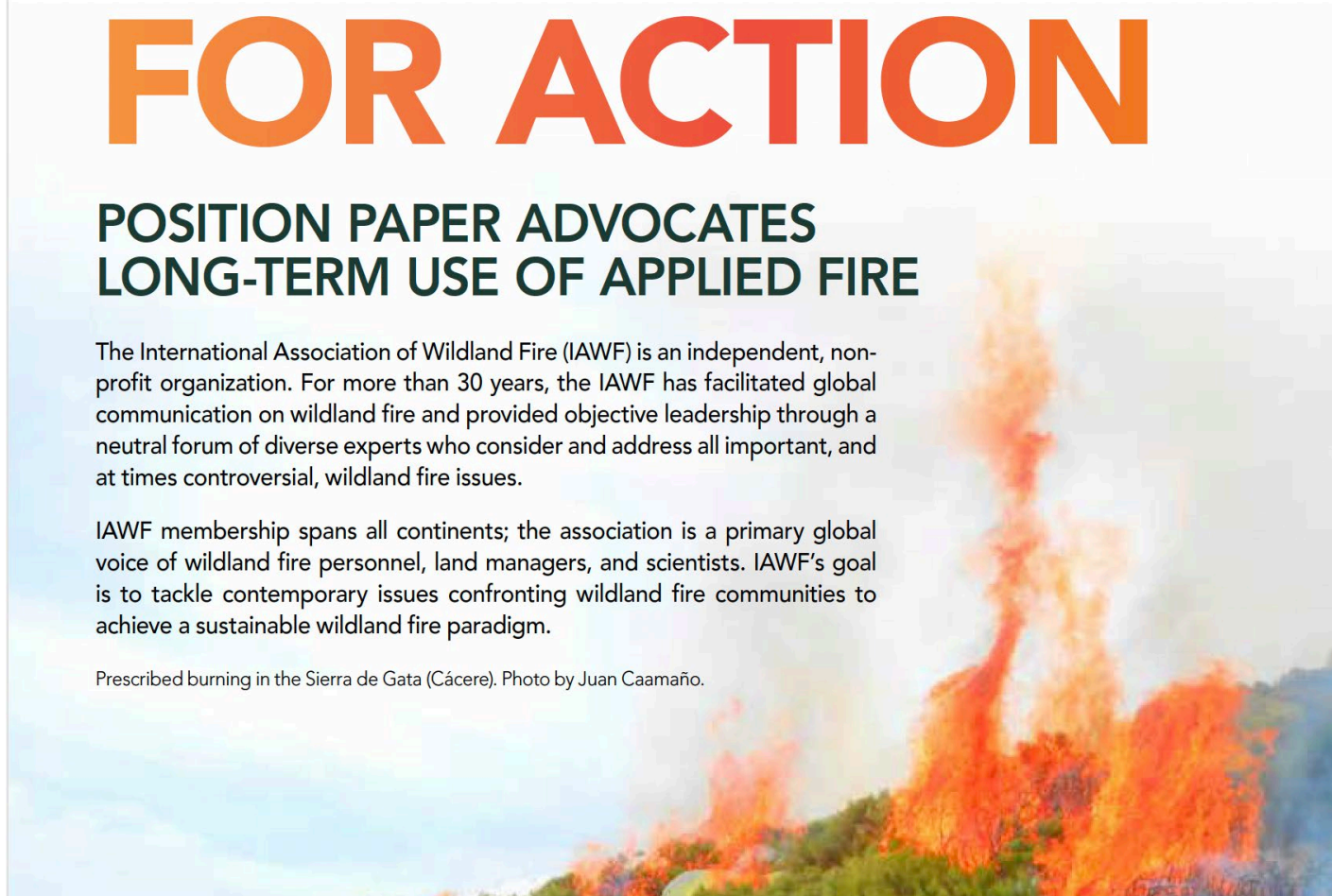
IAWF CALLS FOR ACTION

POSITION PAPER ADVOCATES LONG-TERM USE OF APPLIED FIRE

The International Association of Wildland Fire (IAWF) is an independent, non-profit organization. For more than 30 years, the IAWF has facilitated global communication on wildland fire and provided objective leadership through a neutral forum of diverse experts who consider and address all important, and at times controversial, wildland fire issues.

IAWF membership spans all continents; the association is a primary global voice of wildland fire personnel, land managers, and scientists. IAWF's goal is to tackle contemporary issues confronting wildland fire communities to achieve a sustainable wildland fire paradigm.

Prescribed burning in the Sierra de Gata (Cáceres). Photo by Juan Caamaño.



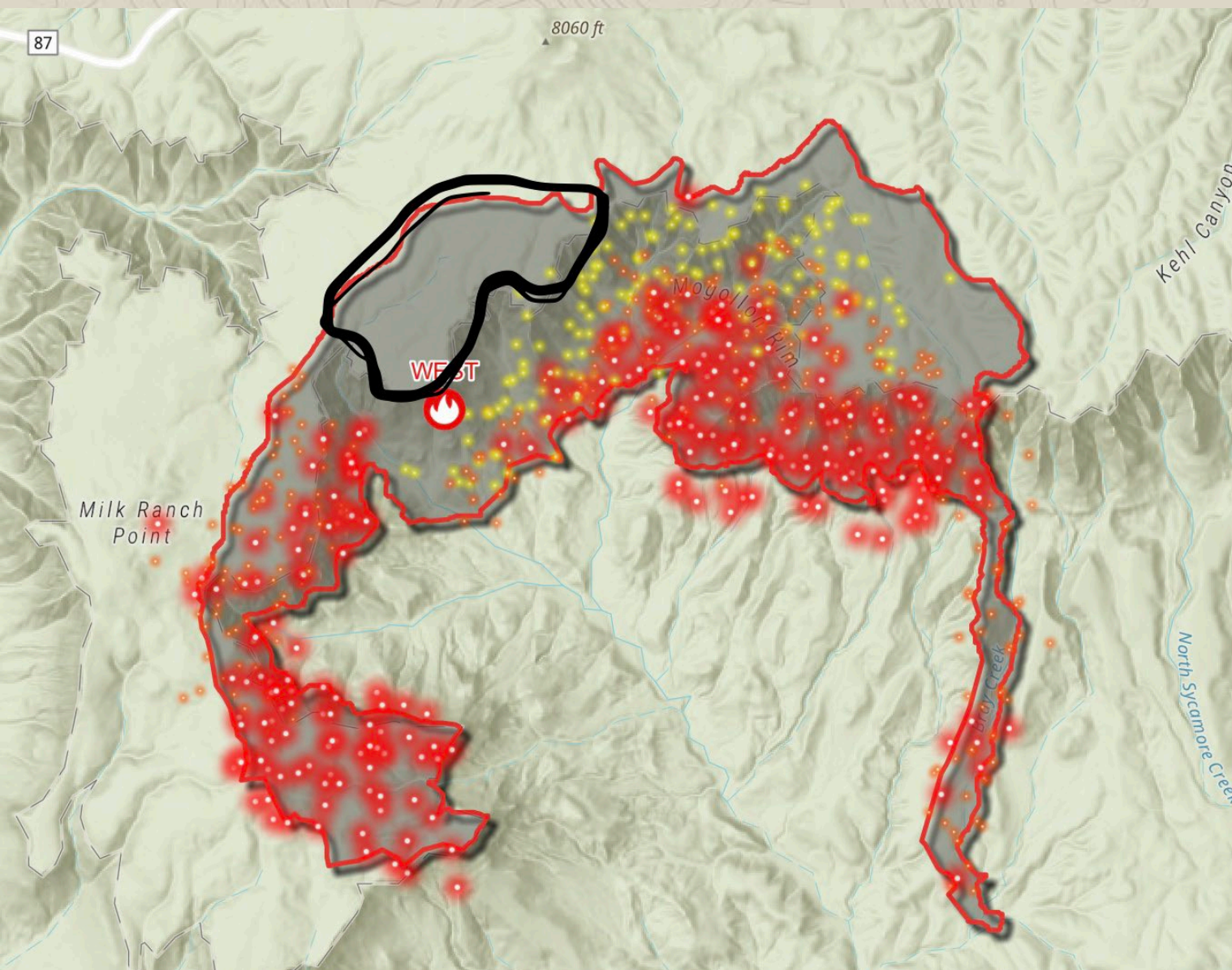
today. Currently, the fire is 10 acres. Smoke can be seen from Camp Geronimo, Geronimo Estates and Bray Creek Ranch but no structures are threatened at this time. Firefighters will continue to monitor the fire and contingency plans are in place should conditions change. [#AZFire](#) [#TontoNF](#)





\$35,000 to train a jumper

4 jumps a season average

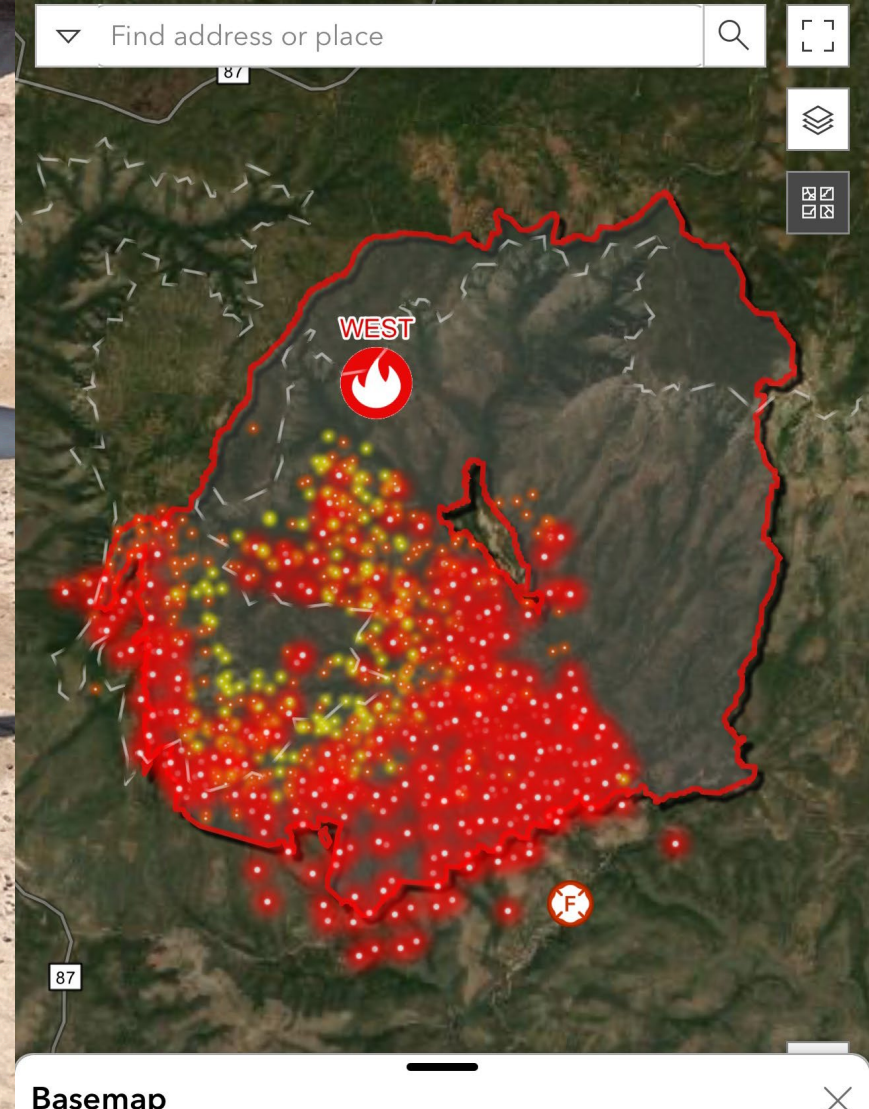


To safely and effectively extinguish fire, when needed; use fire where allowable; manage our natural resources; and as a Nation, live with wildland fire.

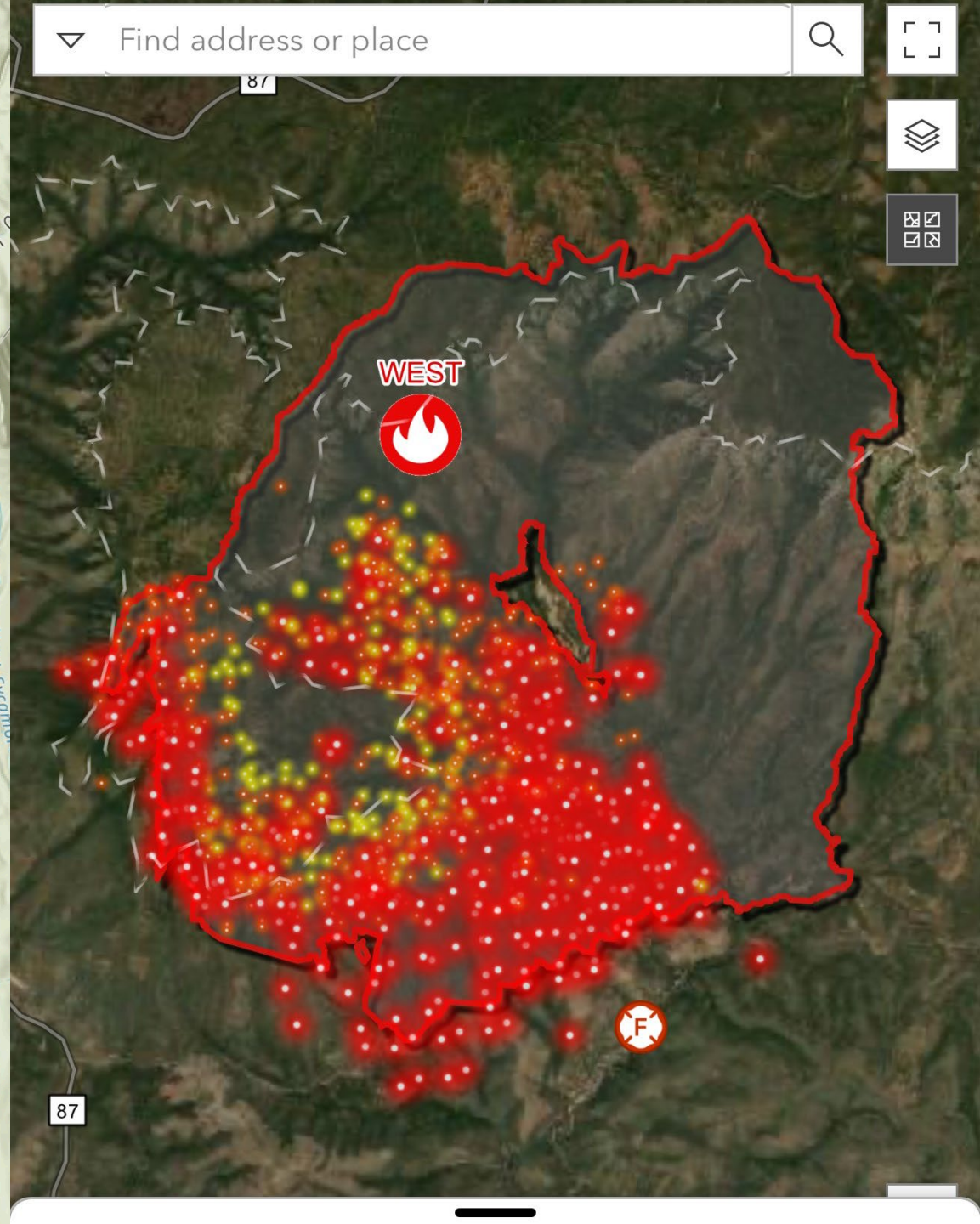
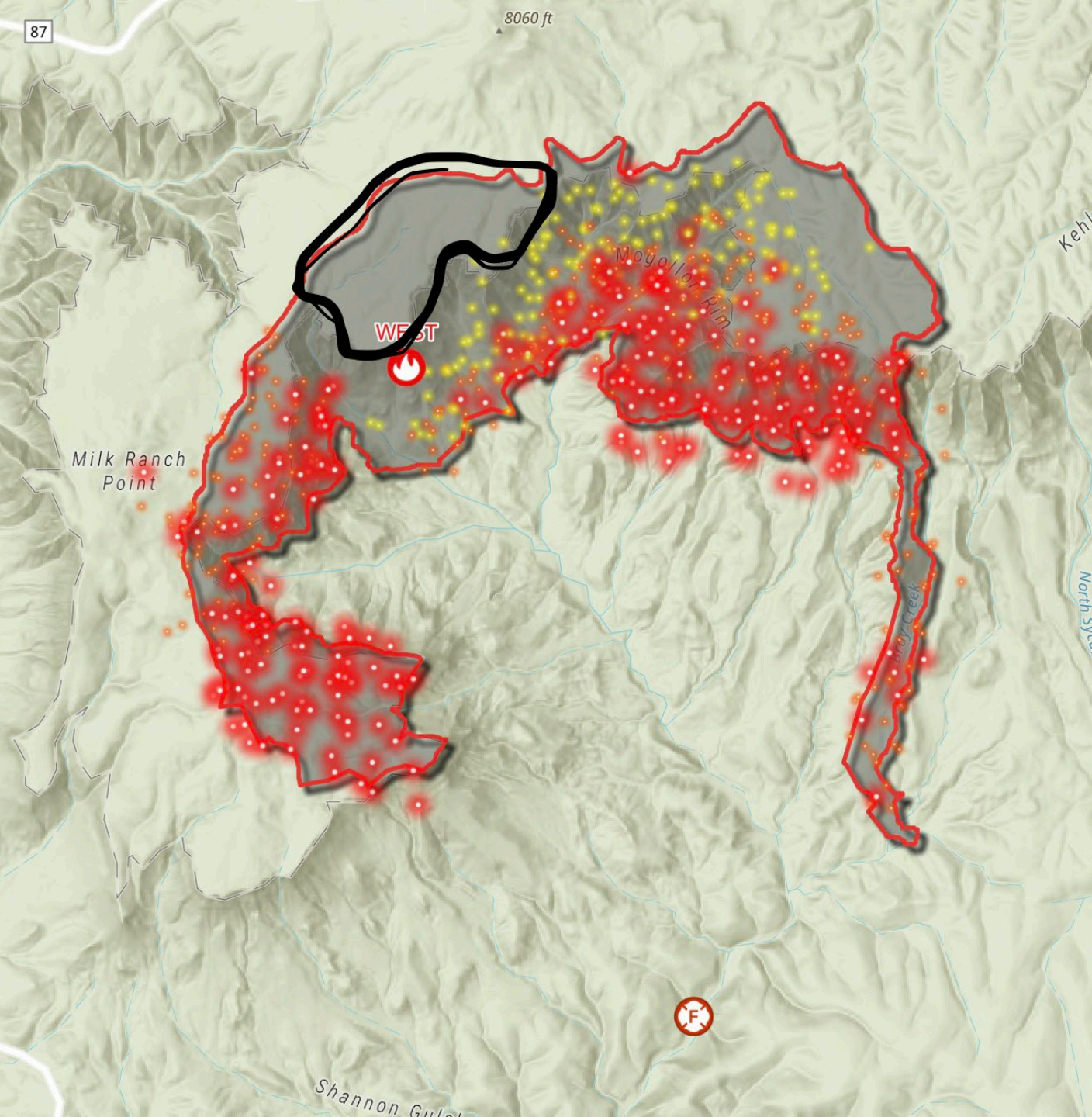
National Cohesive Wildland Fire Management Strategy

West Fire Tonto NF August-September '24

Started and stopped in the black



Drone strikes – Wildfire Use

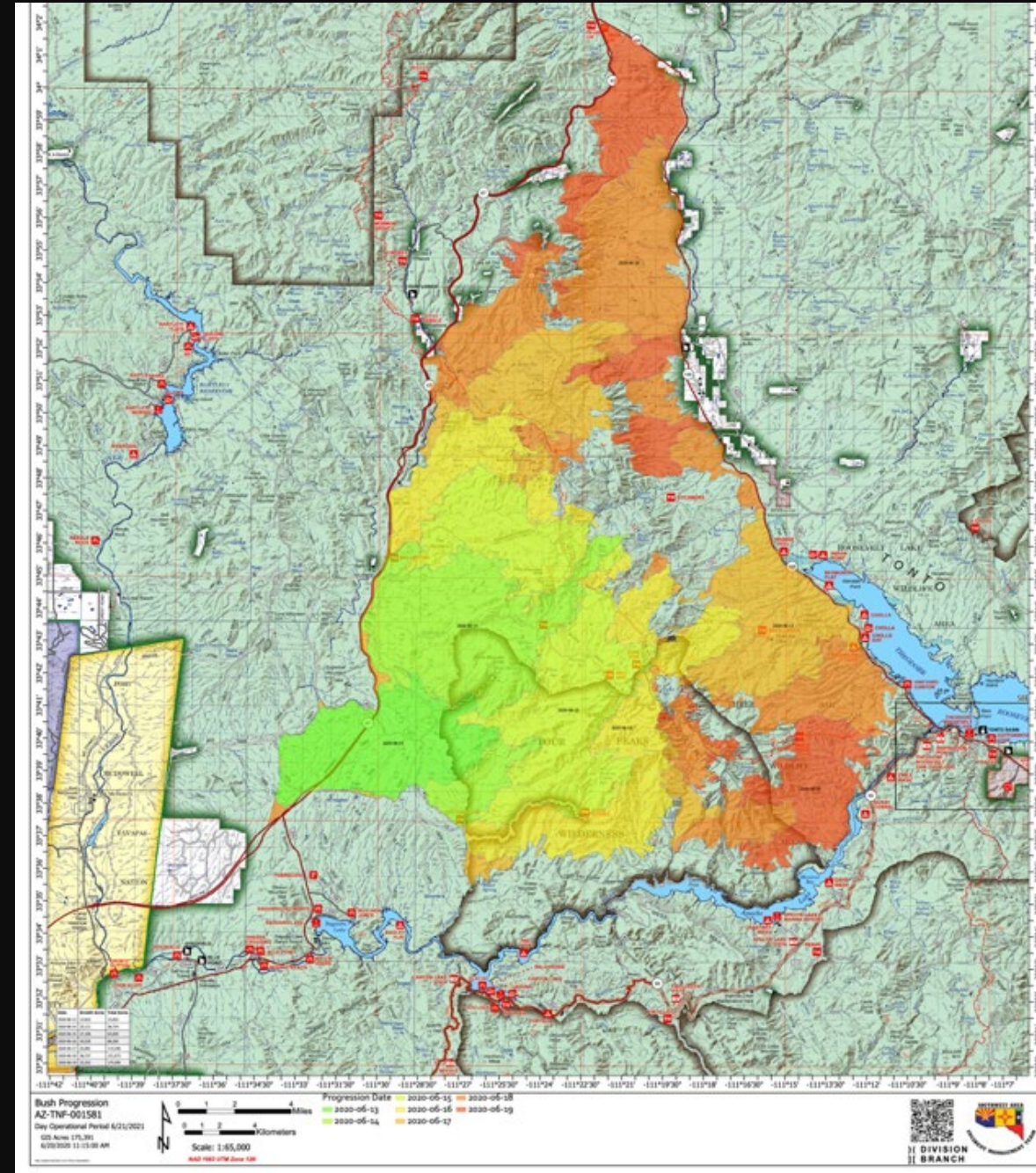


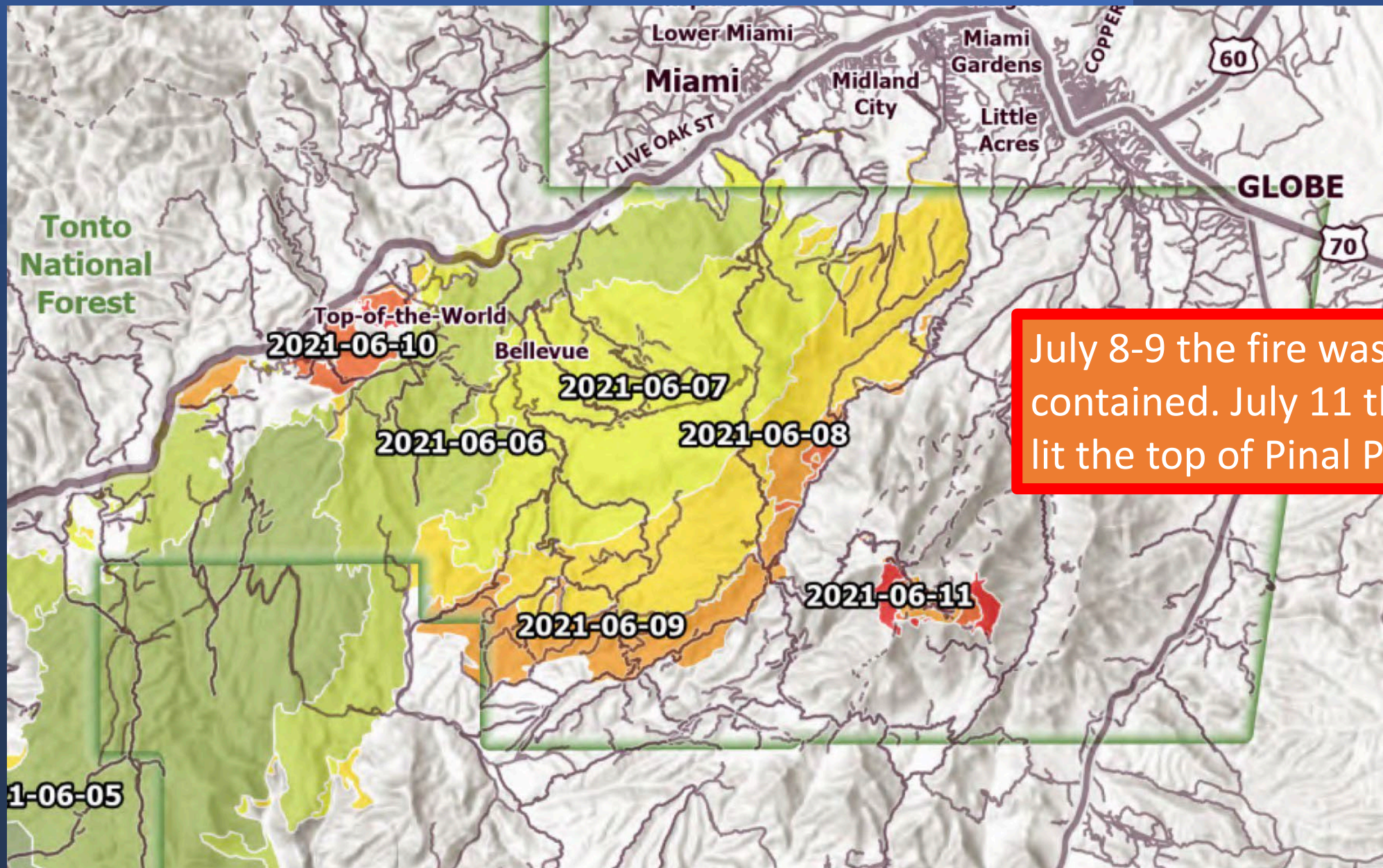
2020 Bush Fire

Firefighters burned everything in orange on purpose

100,000 plus Saguaros

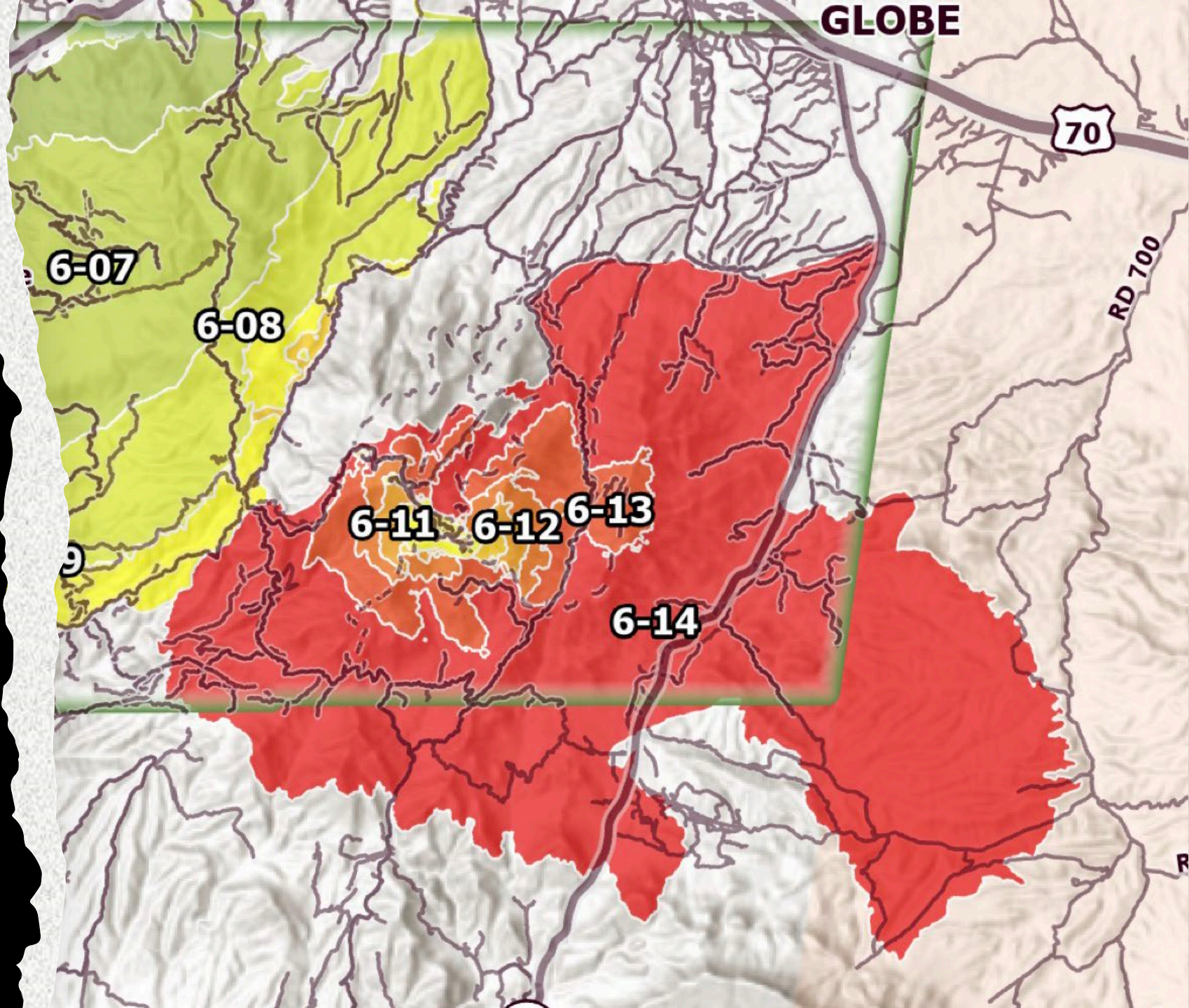
Arizona cypress



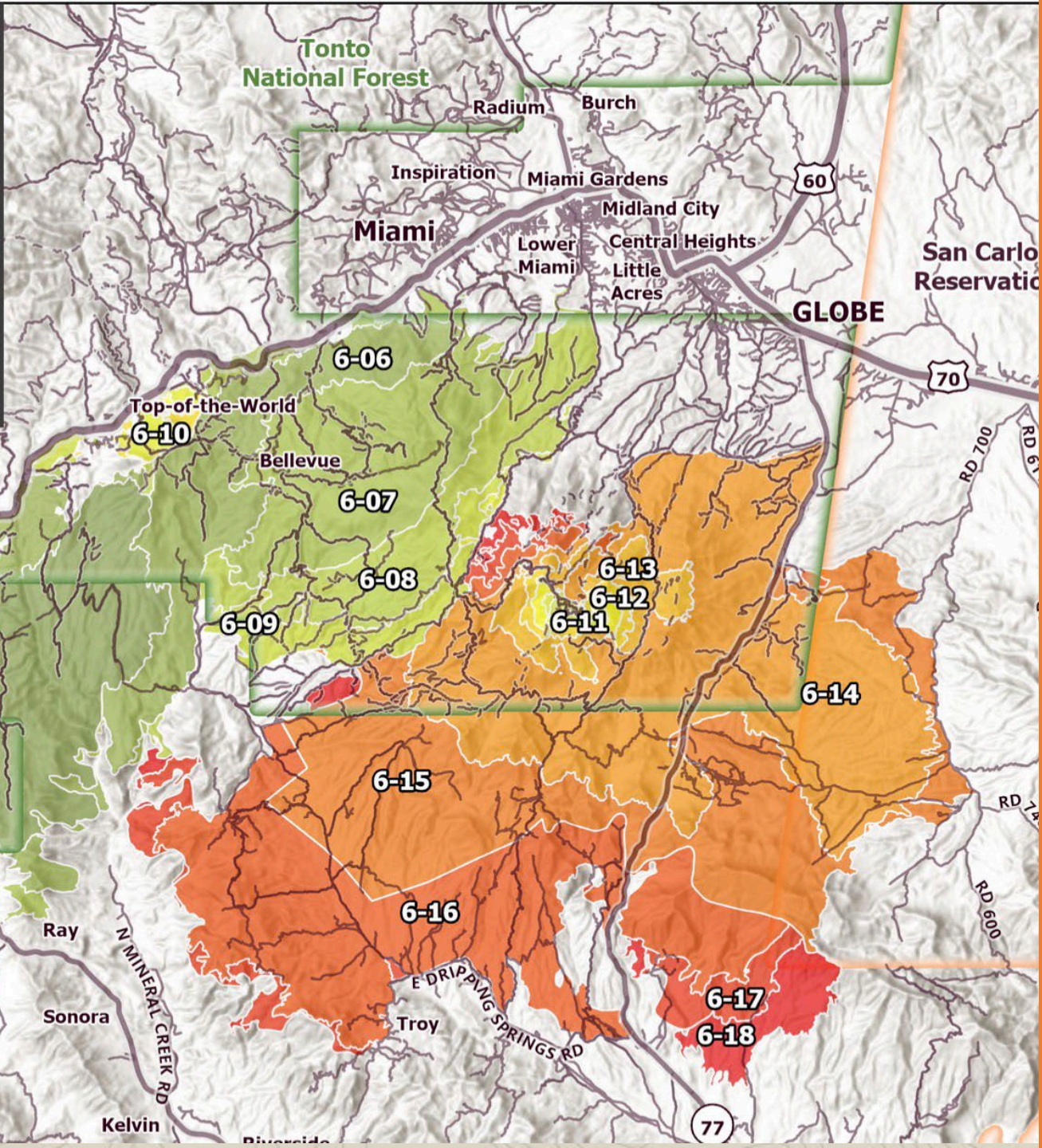
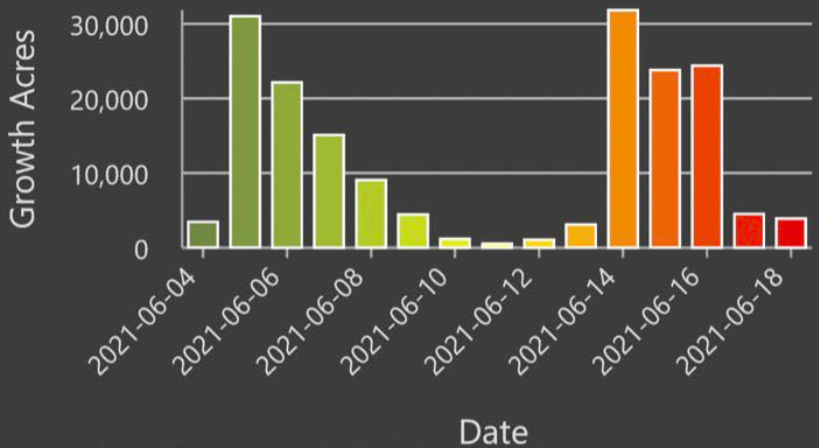


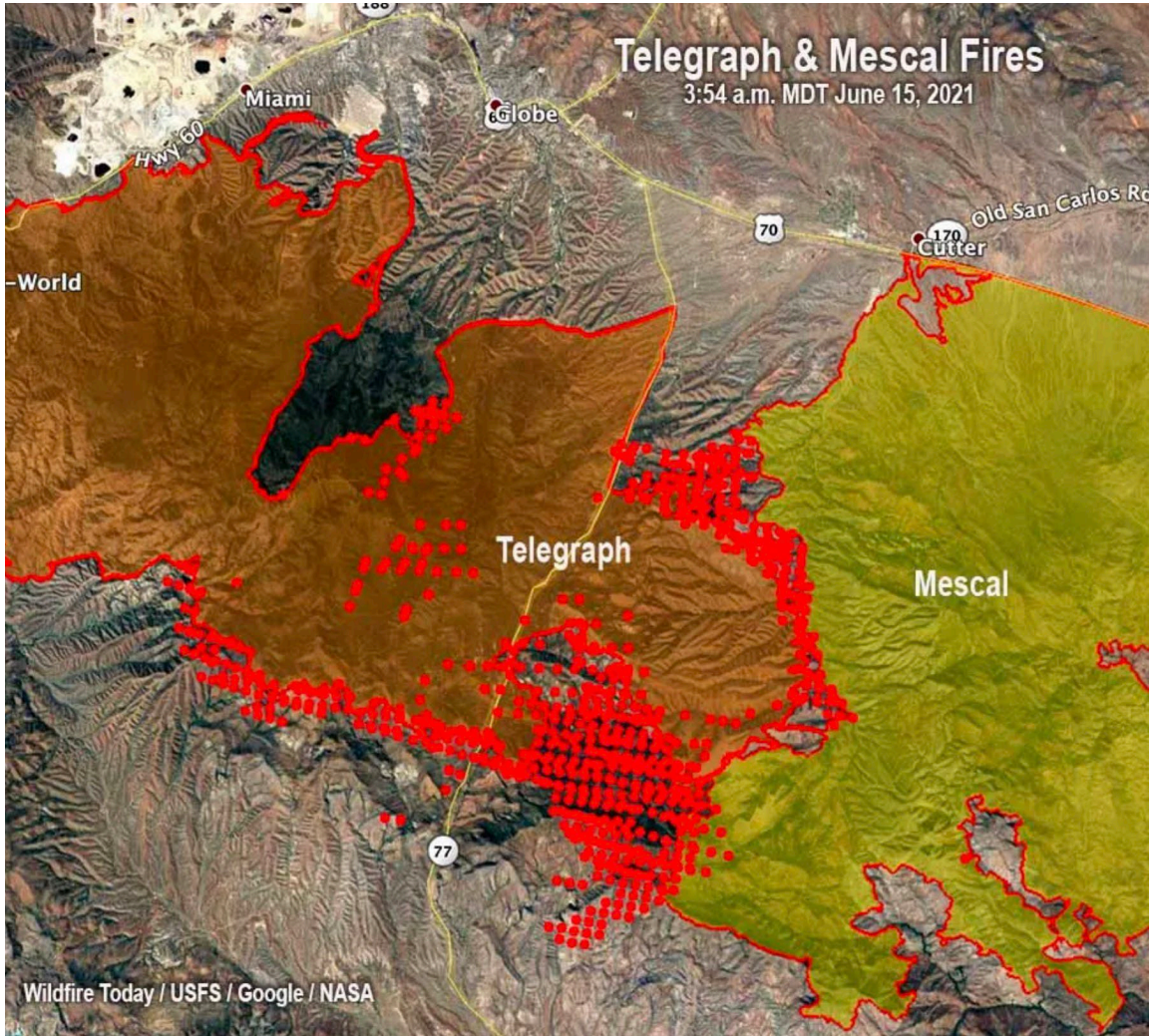
July 8-9 the fire was contained. July 11 the IC lit the top of Pinal Peak.

July 13-14 the IC lit the bottom of the canyons and slopes and burned 36,000 thousand acres including private property, homes, buildings, and infrastructure.




Fire Progression





Firefighters dragged the Telegraph Fire across 85,000 acres to tie into the dormant Mescal Fire and then to burn as much Federal ground in Gila and Pinal Counties as possible with no consideration for private property of private lives



Firefighters lit
the mountain on
fire from the
canyon floor



Lighting fire again
and again even in
quiet sectors....

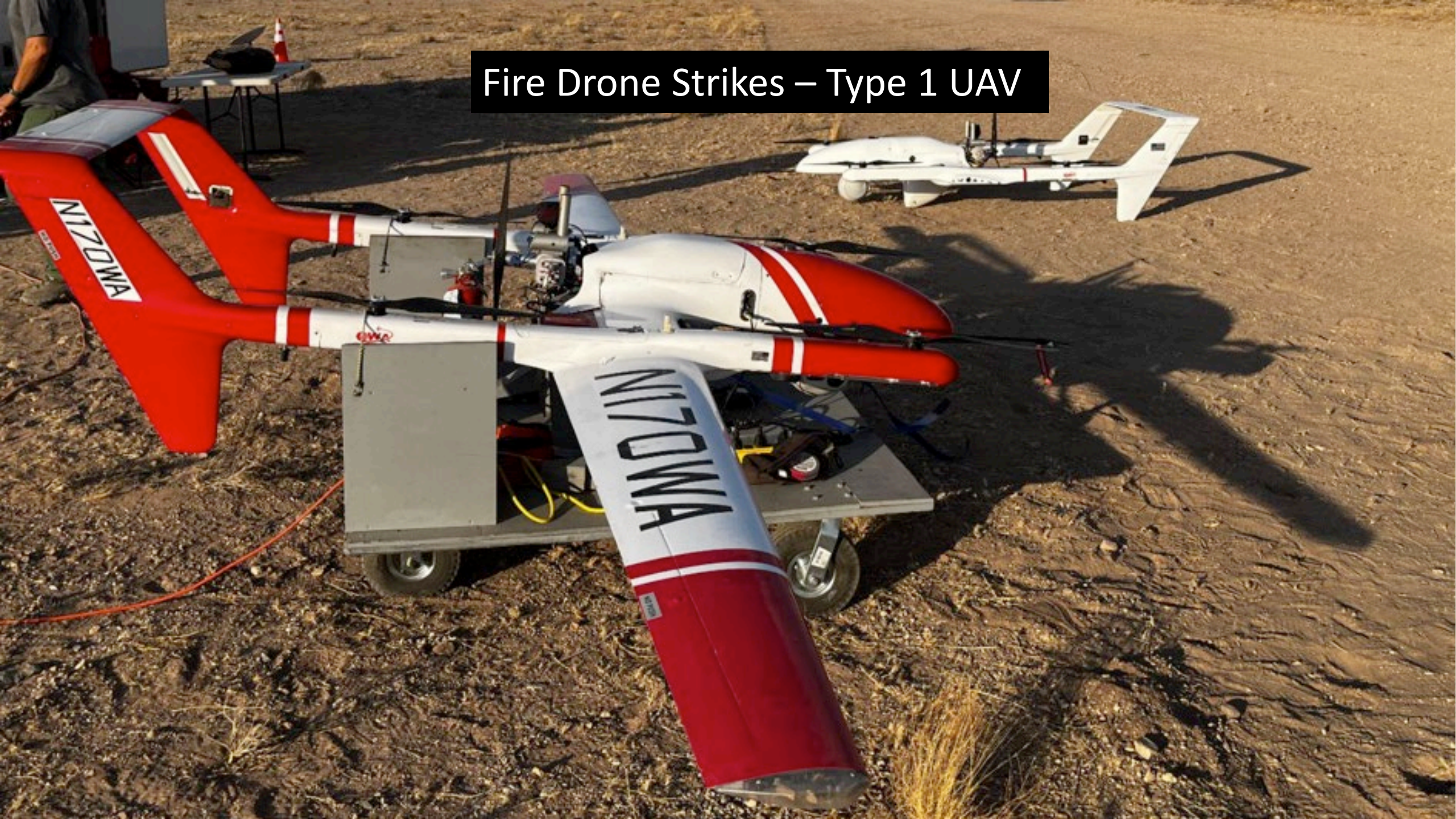
Private property
owners were not
consulted

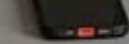
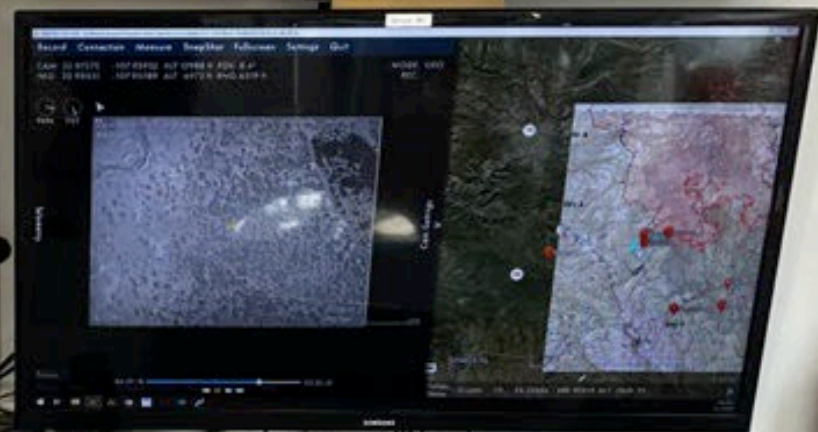
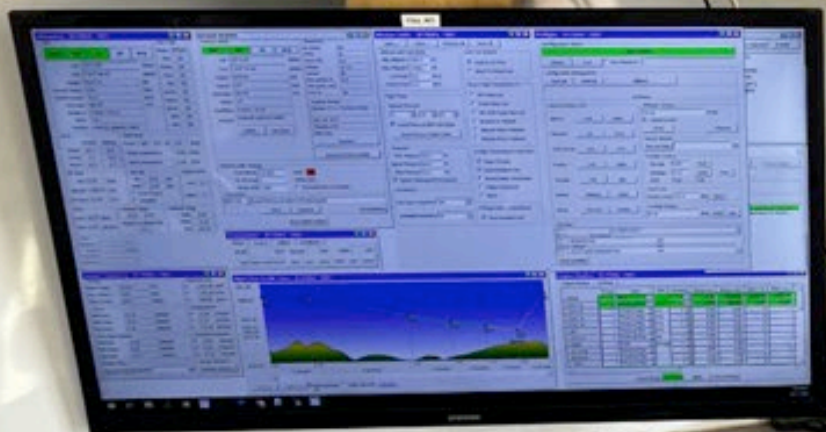




Private property
owners do have an
opinion

Fire Drone Strikes – Type 1 UAV

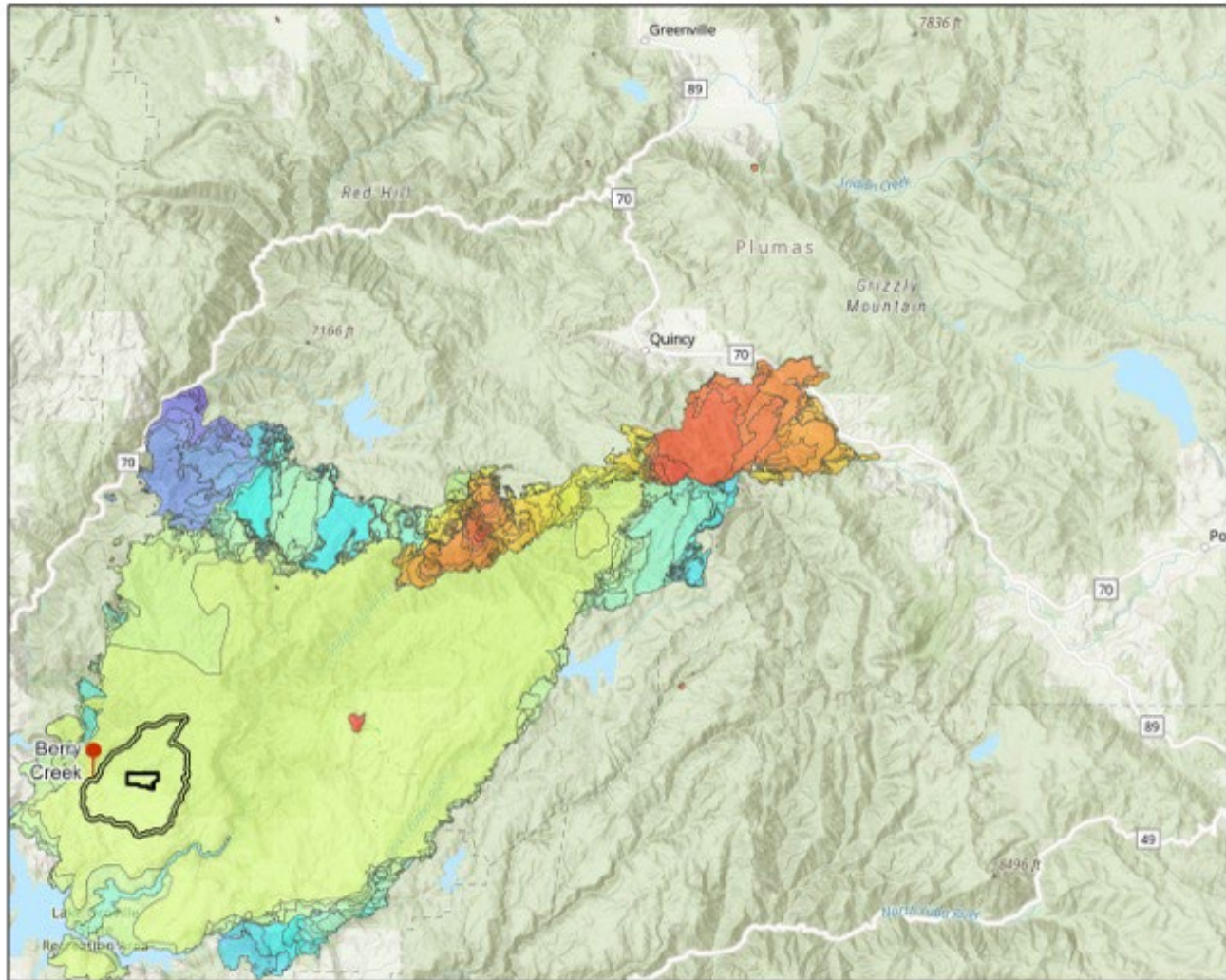






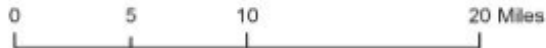
Drones lighting a
ridge in an indirect
firing operation

North Complex Fire Progression



North Complex Fire Progression Map

T21N R5E Sec 25, 26 MDBM Berry Creek & Bush Creek 7.5' Quad Butte County 1:400,000

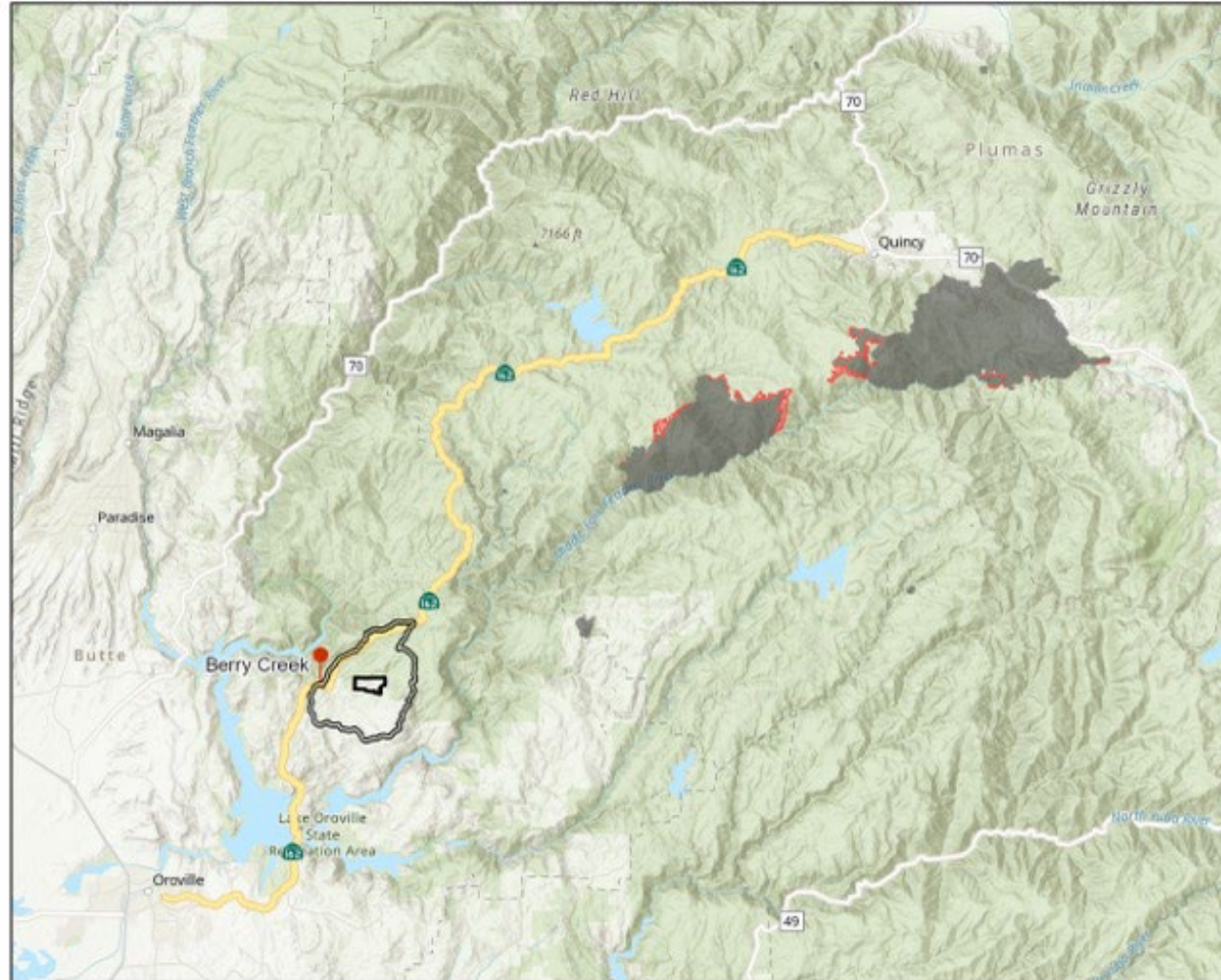


Forester's Co-Op
 Professional Forestry
 & GIS Services
 (530) 273-4326
www.fcoo-op.com

Prepared by EMS
 August 25th, 2022

North Complex Fire Progression

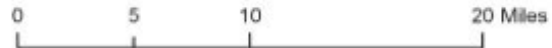
- Burned Area
36,663 Acres
- 09 / 03 / 2020
858 Acres
- Camp Okizu
Boundary
- Berry Creek
Watershed
- 🚗 Oroville-Quincy
Highway State
Route 162
- 📍 Berry Creek



North Complex Fire Progression Map Series (09/03/2020)

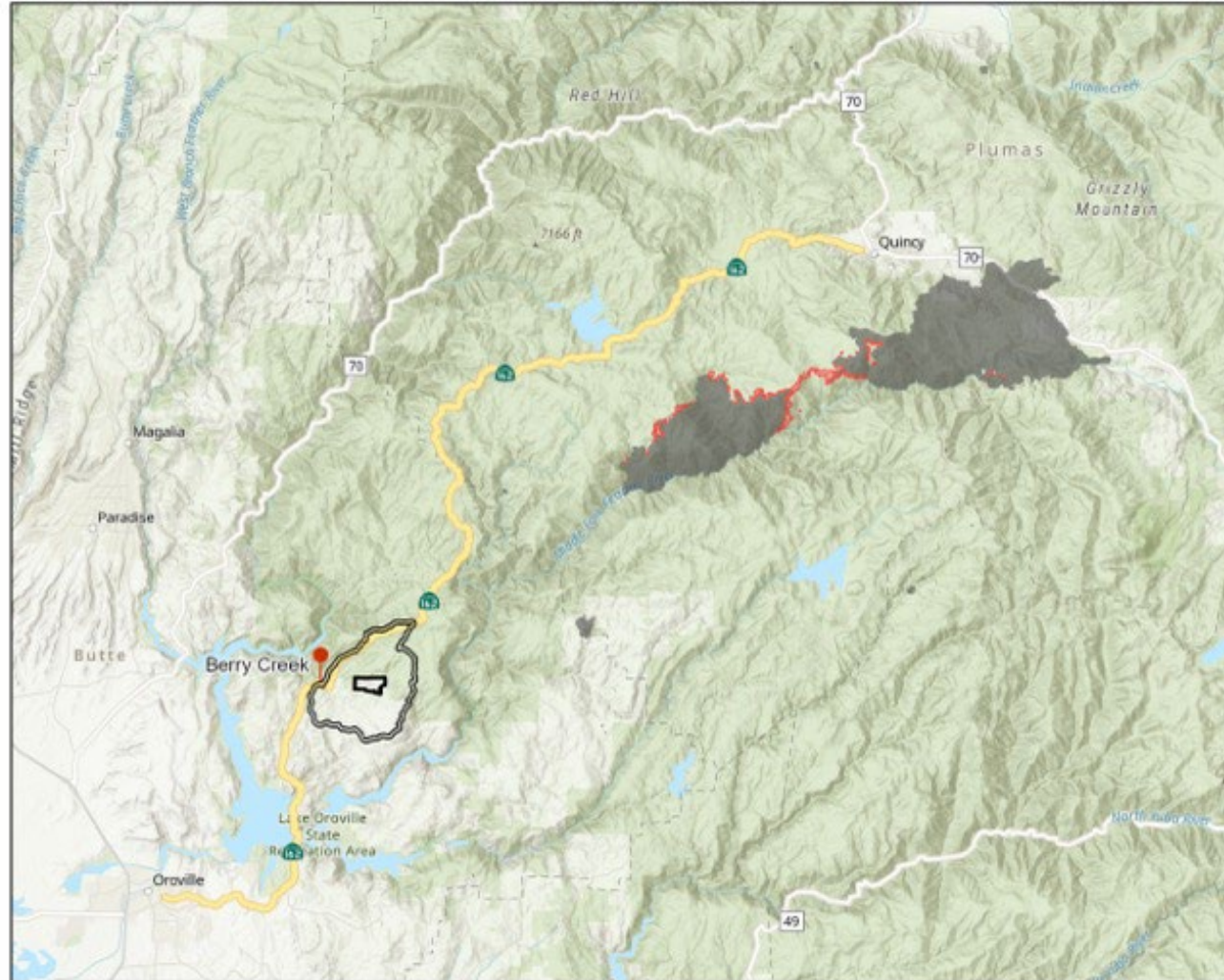
T21N R5E Sec 25, 26 MDBM Berry Creek & Bush Creek 7.5' Quad Butte County 1:400,000

Prepared by EMS
August 30th, 2022



North Complex Fire Progression

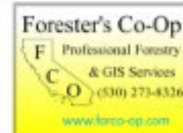
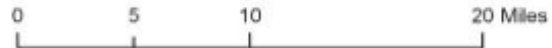
- Burned Area
37,522 Acres
- 09 / 04 / 2020
873 Acres
- Camp Okizu
Boundary
- Berry Creek
Watershed
- 🚚 Oroville-Quincy
Highway State
Route 162
- 📍 Berry Creek



North Complex Fire Progression Map Series (09/04/2020)

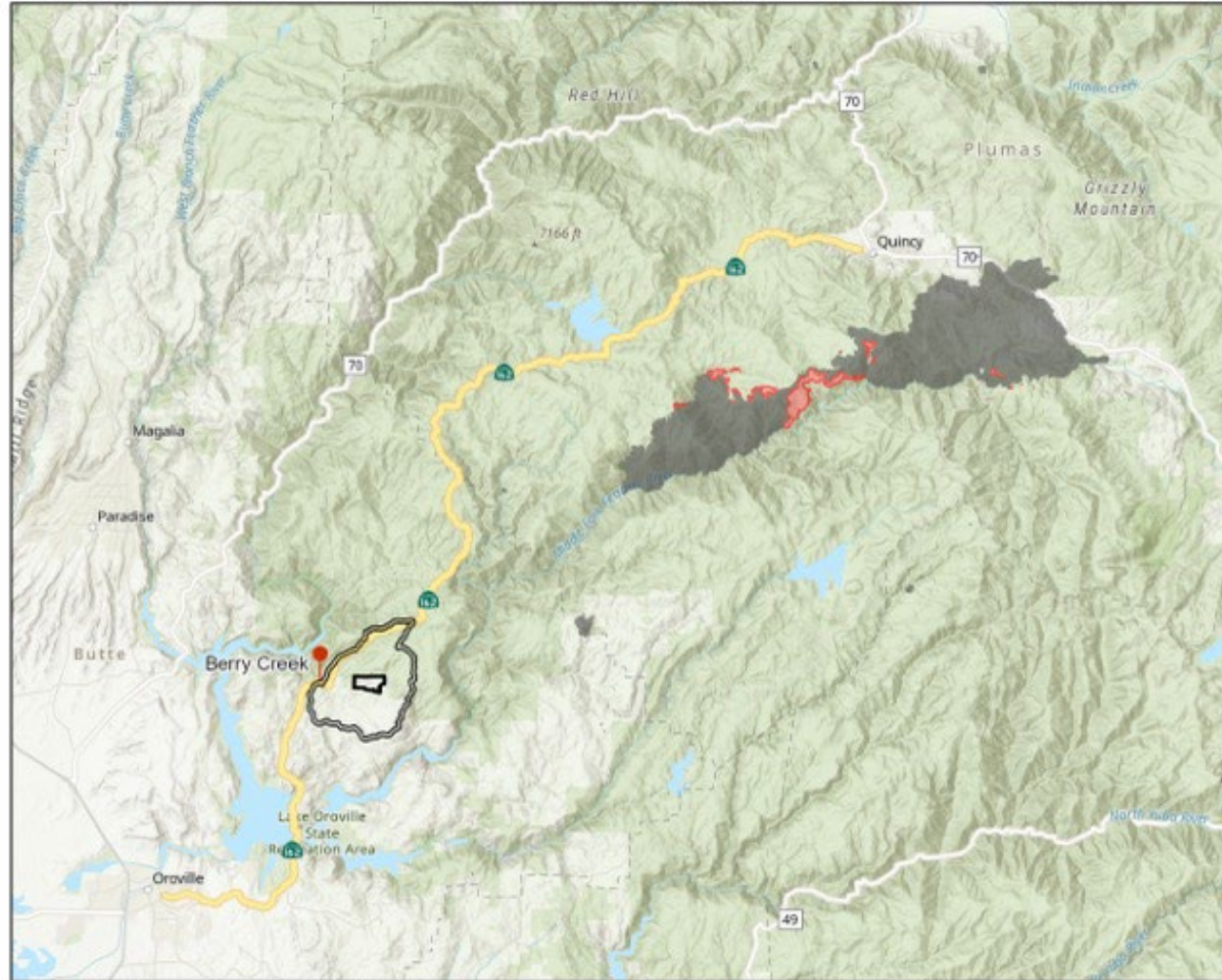
T21N R5E Sec 25, 26 MDBM Berry Creek & Bush Creek 7.5' Quad Butte County 1:400,000

Prepared by EMS
August 30th, 2022



North Complex Fire Progression

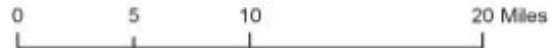
- Burned Area
38,394 Acres
- 09 / 05 / 2020
1,645 Acres
- Camp Okizu
Boundary
- Berry Creek
Watershed
- 🚚 Oroville-Quincy
Highway State
Route 162
- 📍 Berry Creek



North Complex Fire Progression Map Series (09/05/2020)

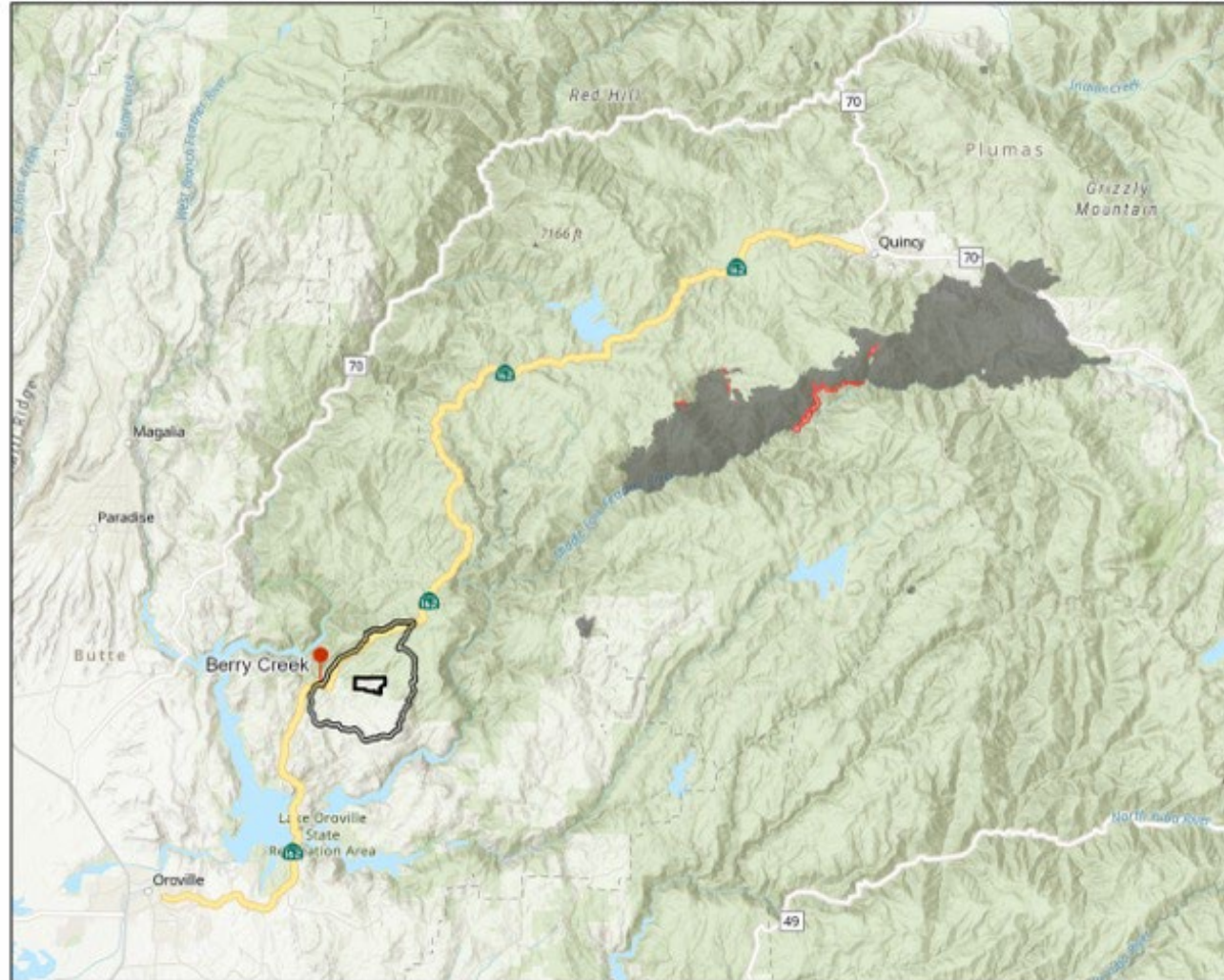
T21N R5E Sec 25, 26 MDBM Berry Creek & Bush Creek 7.5' Quad Butte County 1:400,000

Prepared by EMS
August 30th, 2022



North Complex Fire Progression

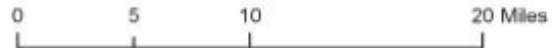
- Burned Area
40,633 Acres
- 09 / 07 / 2020
471 Acres
- Camp Okizu
Boundary
- Berry Creek
Watershed
- 🚚 Oroville-Quincy
Highway State
Route 162
- 📍 Berry Creek



North Complex Fire Progression Map Series (09/07/2020)

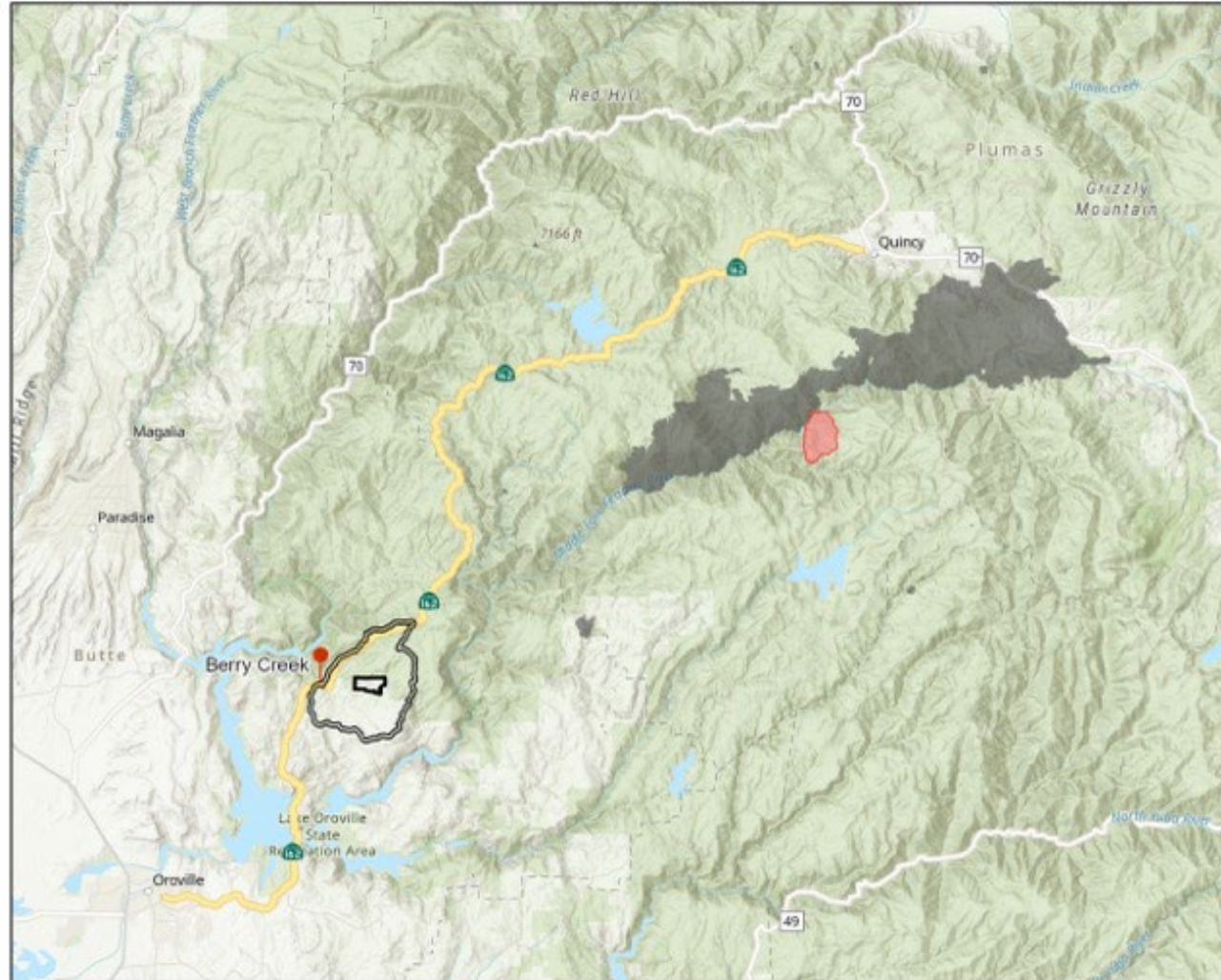
T21N R5E Sec 25, 26 MDBM Berry Creek & Bush Creek 7.5' Quad Butte County 1:400,000

Prepared by EMS
August 30th, 2022



North Complex Fire Progression

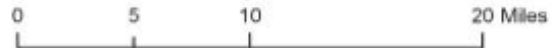
- Burned Area
41,104 Acres
- 09 / 08 / 2020
1,692 Acres
- Camp Okizu
Boundary
- Berry Creek
Watershed
- 🚚 Oroville-Quincy
Highway State
Route 162
- 📍 Berry Creek

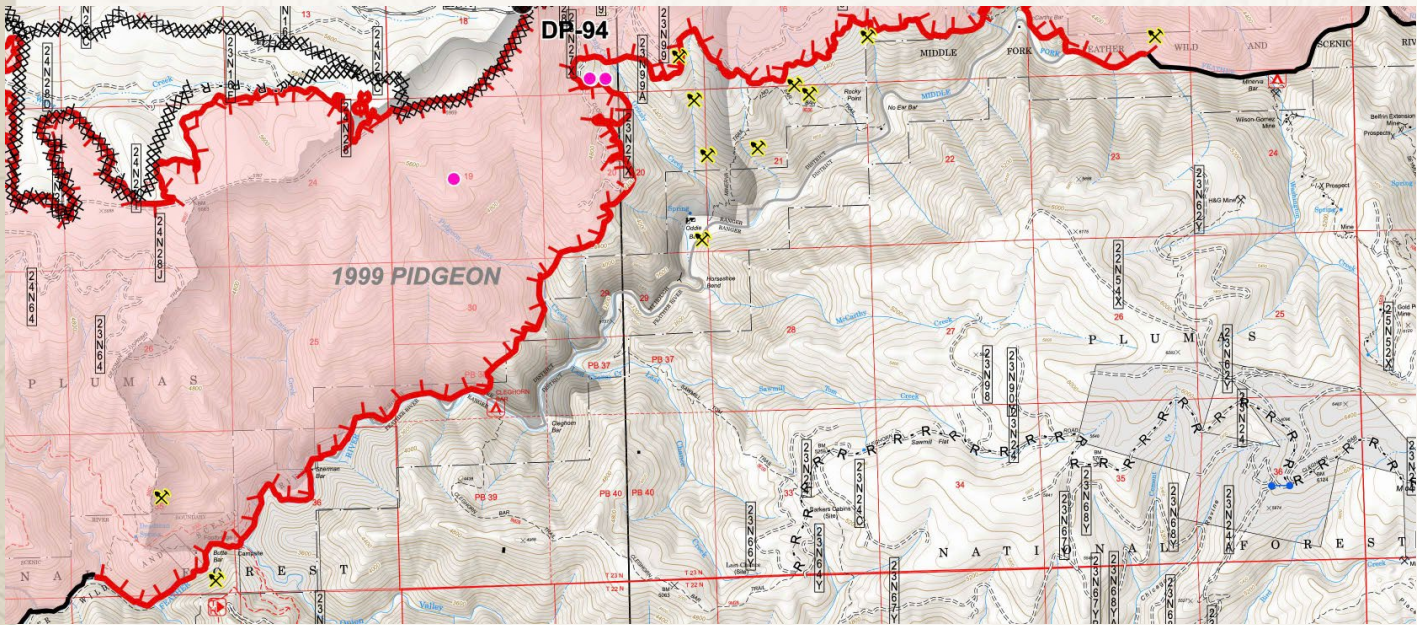


North Complex Fire Progression Map Series (09/08/2020)

T21N R5E Sec 25, 26 MDBM Berry Creek & Bush Creek 7.5' Quad Butte County 1:400,000

Prepared by EMS
August 30th, 2022

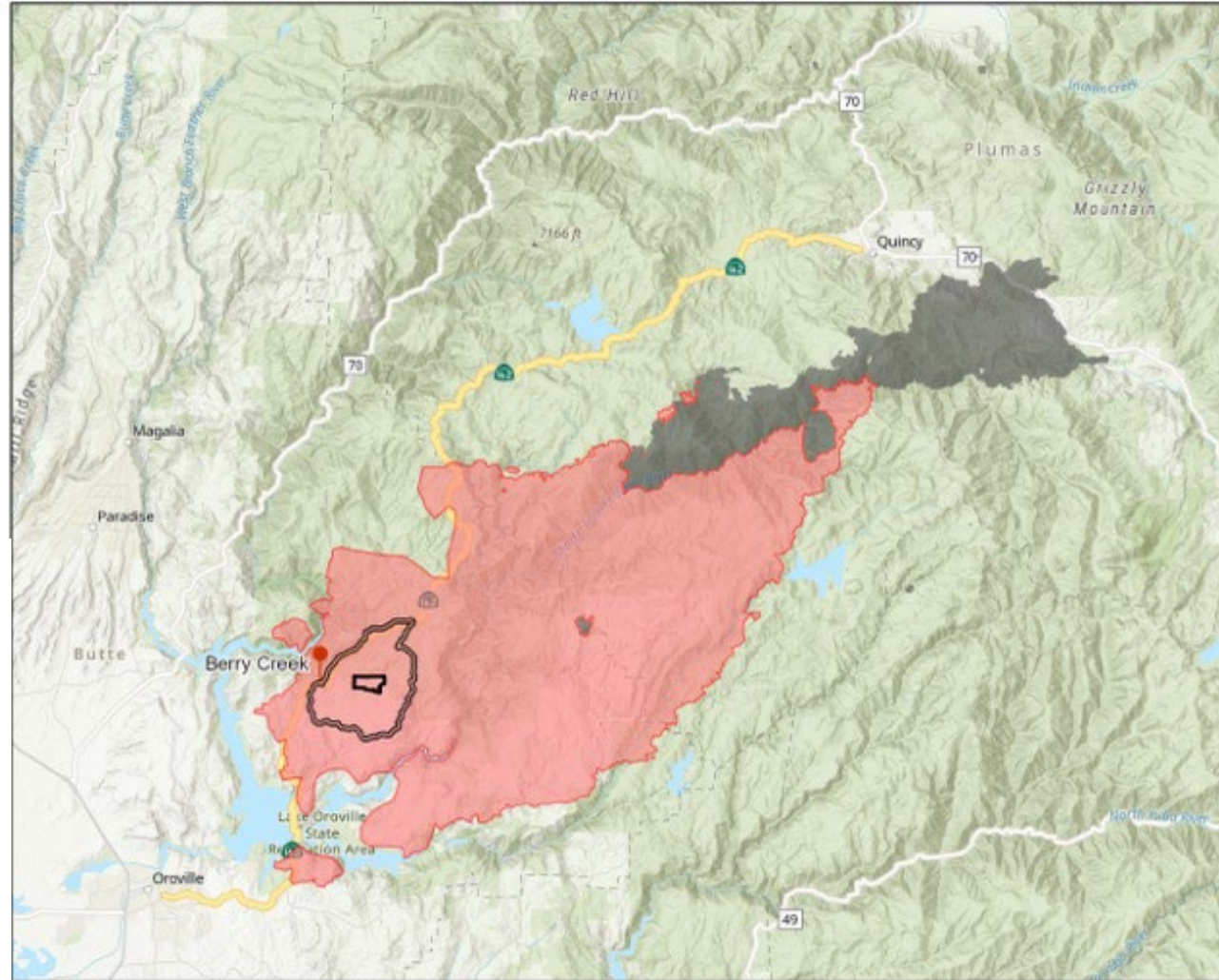




- 194,000 acres
- 16 Dead
- Herds dead
- Billions in Damages

North Complex Fire Progression

- Burned Area
41,796 Acres
- 09 / 09 / 2020
181,596 Acres
- Camp Okizu Boundary
- Berry Creek Watershed
- Oroville-Quincy Highway State Route 162
- Berry Creek



North Complex Fire Progression Map Series (09/09/2020)

T21N R5E Sec 25, 26 MDBM Berry Creek & Bush Creek 7.5' Quad Butte County 1:400,000



Prepared by EMS
August 30th, 2022

The Bear Fire killed everything 2020

Rancher Dave Daley lost
several hundred cattle and
his entire permitted range.
Daley Photo





No compensation to private
landowners damaged by
wildfire use / applied wildfire

—

No legal
basis...

- Wildfire Use and Managed fire are major federal actions that demands conformance to procedural law including NEPA/NFMA/APA and substantive laws including Clean Air, Clean Water, ARPA, T&E.
- There is no programmatic EIS or unit EISs, no Records of Decision, no public processes or objection periods.
- Fire managers are using “emergency fire suppression” money to conduct massively expensive and time-consuming “prescribed wildfires” with no specific authorization from Congress.

Public and private
landowners are
unaware of the
policy until after the
fire



Proprietary decisions
are made to use a
wildfire with no
outside input and no
opportunity to
object or participate



California Says Federal 'Let it Burn' Policy is Reckless as Wildfires Rage Out of Control





Dixie Fire

Firefighters lit 600,000 acres of the million-acre Dixie Fire on purpose

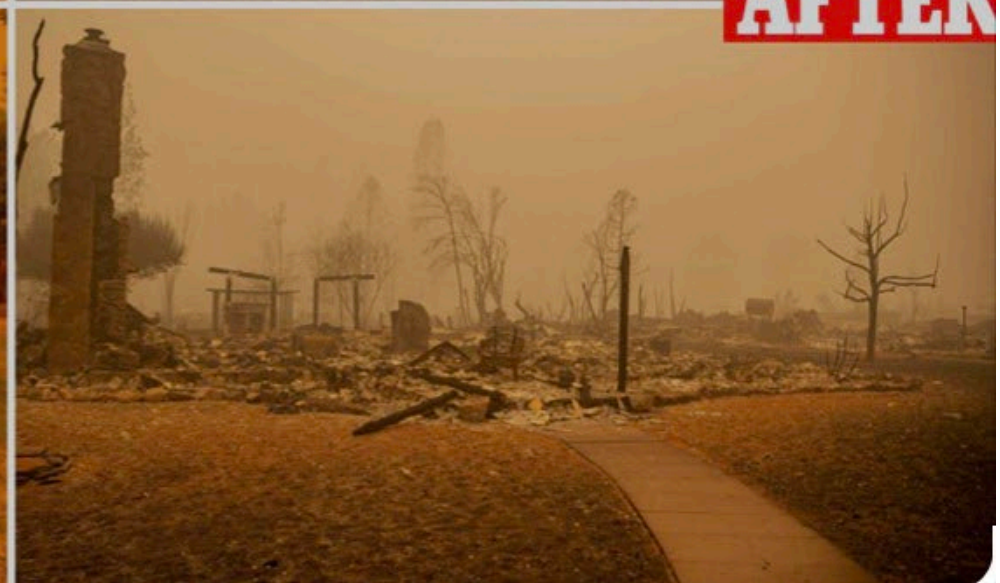
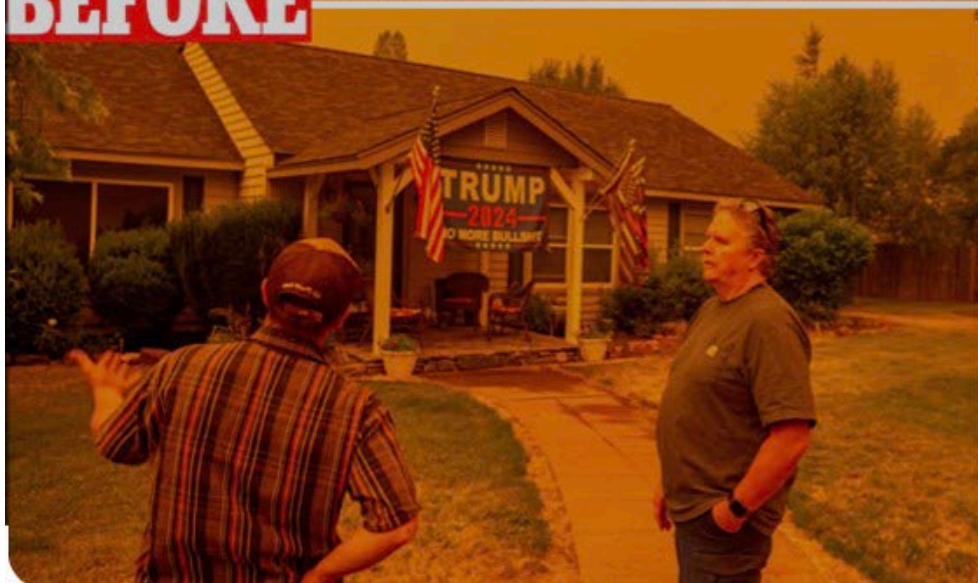
<https://the-lookout.org/2023/09/08/dixie-fire-firing-operations/>



BEFORE



AFTER



Using Congressionally appropriated WFM “emergency fire suppression” dollars to field thousands of firefighters to do unprescribed wildfires for 8 months through the spring, summer, and fall....

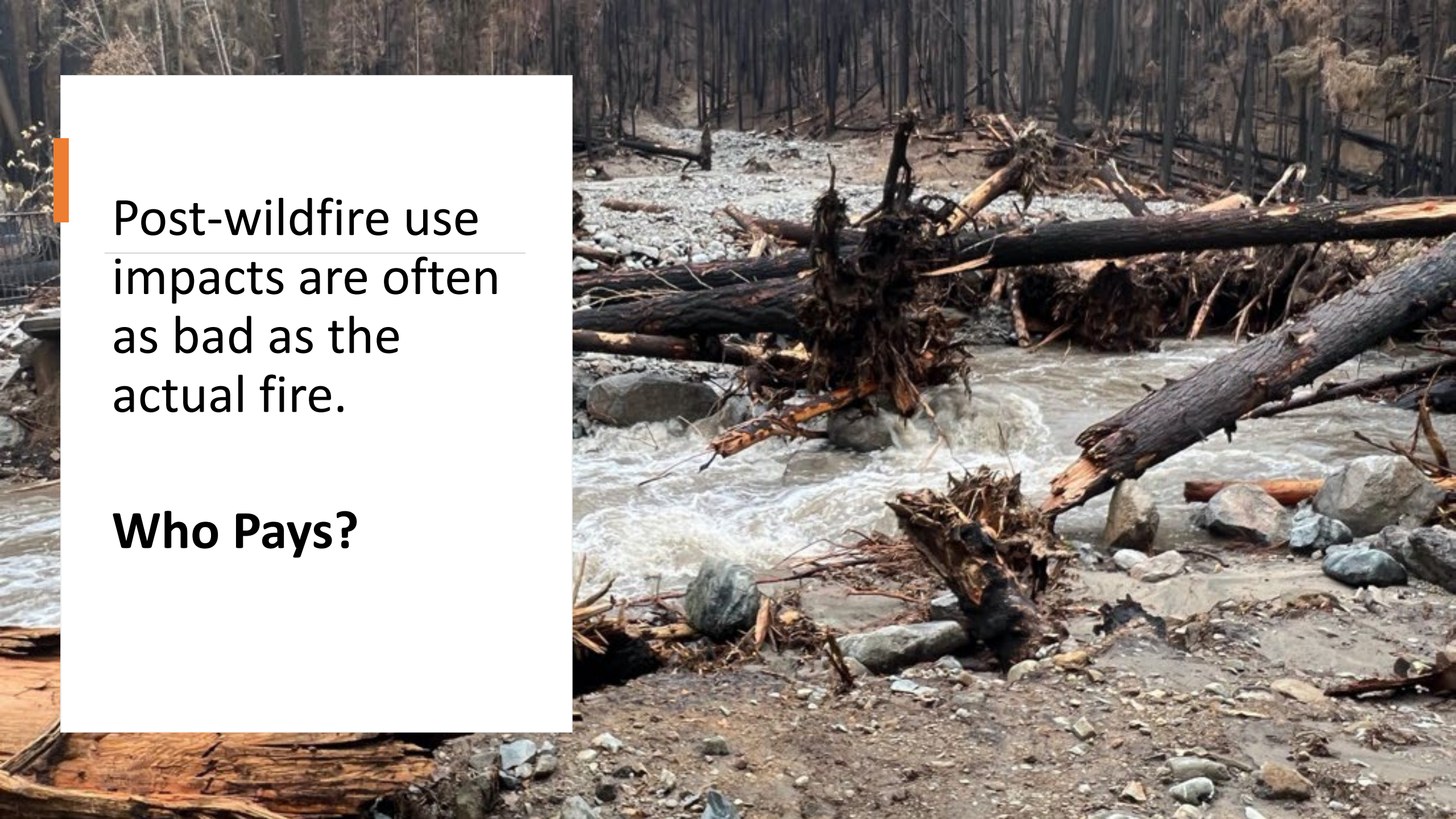


The National strategy is not National...

- Forest Service – Wildfire use. No NEPA/NFMA
- National Park Service – Implements only with NEPA without regard for private
- BLM – Very limited use
- BIA – Does not use
- States – Do not use
- Private – Does not use



Family of three killed in post fire flooding



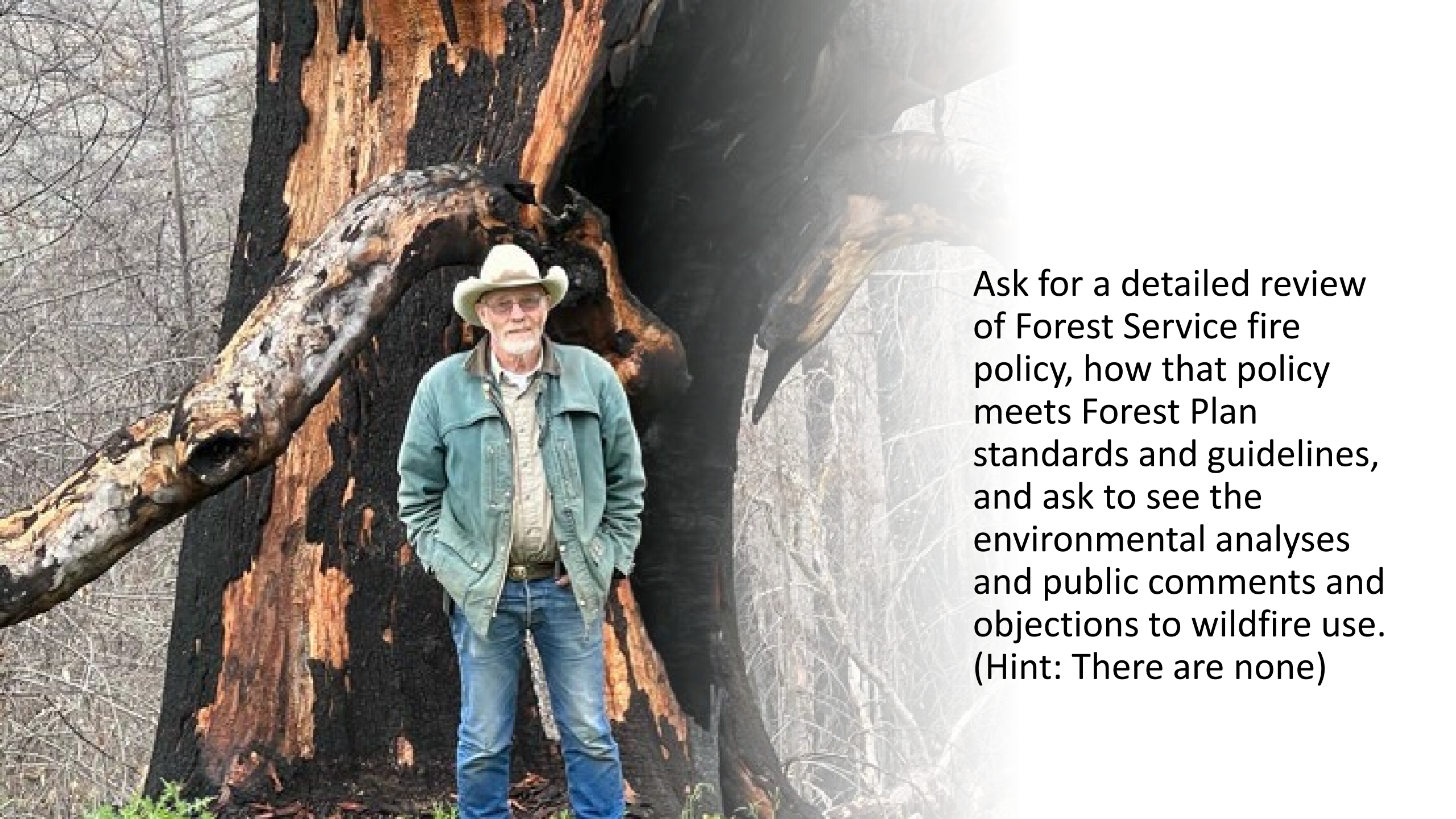
Post-wildfire use
impacts are often
as bad as the
actual fire.

Who Pays?



\cong 54 bears were
killed in the Caldor
Fire in 2021





Ask for a detailed review of Forest Service fire policy, how that policy meets Forest Plan standards and guidelines, and ask to see the environmental analyses and public comments and objections to wildfire use. (Hint: There are none)

Zeke Lunder

“We should...not pretend ... the Forest Service is a functional agency because it's not. They can't meet our expectations of them getting anything done because they can't. They lost so much they're really not a functional agency. They can't do anything at scale, and they haven't been able to since they stopped cutting big trees They were really good at cutting big trees ..., but since then they no longer have a function. They've lost their esprit de corps and sense of purpose, and their reason for being has gone away So, they still have to manage the land with active management ...what does that leave us? Well, using fire is active forest management. So, they're using fire.”



There's a bear in the woods, alright, and it's not Smokey Bear!



Are you ready?



PFMc



Spraying a bunch of napalm on the edge of a fire scar that is too green to burn and directly adjacent to eager-to-burn natural fuels seems like it could cause some real problems going into our strong east wind season. I am glad people seem to be taking their time to figure out this part of the fire. That said, the fire they put on the ground here a few days ago is pushing to the west and will soon outflank the area they fired. So once again, the fire is going to force our hand. There is a crude saying on Hotshot crews: 'Don't crawl up the devil's asshole with a book of matches.' Meaning don't rush to light back fires when you can't hold the fire you've already got. I have been thinking of this one a lot in the past 50 days.

Commentary from a Mapper

"The burn they did on West Prospect Peak was slow because the nine-year-old snow brush from the Reading Fire was too green to burn. From what I could see the other day thru the smoke when I went to Old Station, I don't think they got a clean black line, just some random stuff burning. They were talking about using a terra torch (truck-mounted napalm flame-thrower) to make it burn -hmm- if its that green maybe we should put some direct line up on the old reading fire scar and be done — but I get it, I am old school."

Commentary from
an FF